

Energy Monitoring Solution with LoRaWAN Technology



Overview:

Our energy monitoring solution utilises LoRaWAN (Long Range Wide Area Network) technology to provide efficient and reliable monitoring of energy consumption in diverse environments. Managed by Elcomponent metering experts, this solution offers real-time insights into energy usage, empowering businesses to optimise efficiency, reduce costs, and enhance sustainability efforts.

Key Features:

- **LoRaWAN Connectivity:** Utilises LoRaWAN wireless technology for long-range communication, enabling seamless data transmission over extended distances with minimal power consumption.
- **Real-time Data Acquisition:** Captures energy consumption data in real-time, providing insights into usage patterns, anomalies, and trends.
- **Remote Monitoring:** Enables remote monitoring of energy consumption across multiple sites from a centralised dashboard, facilitating proactive management and troubleshooting.
- **Customisable Dashboards:** Offers customisable dashboards tailored to specific user requirements, allowing stakeholders to visualise and analyse energy data in intuitive formats.
- **Data Analytics:** Employs advanced analytics tools to process and analyse energy data, identifying optimisation opportunities and potential areas for improvement.
- **Integration Capabilities:** Seamlessly integrates with existing energy management systems, and third-party applications for enhanced interoperability and data exchange.
- **Scalability:** Scalable architecture accommodates the expansion of monitoring capabilities to adapt to evolving business needs and growing infrastructure.

01278 503173 | sales@elcomponent.co.uk

www.lora-sense.co.uk | www.elcomponent.co.uk

- **Secure Data Transmission:** Ensures data security through encryption and authentication mechanisms, safeguarding sensitive information against unauthorised access or tampering.



Benefits:

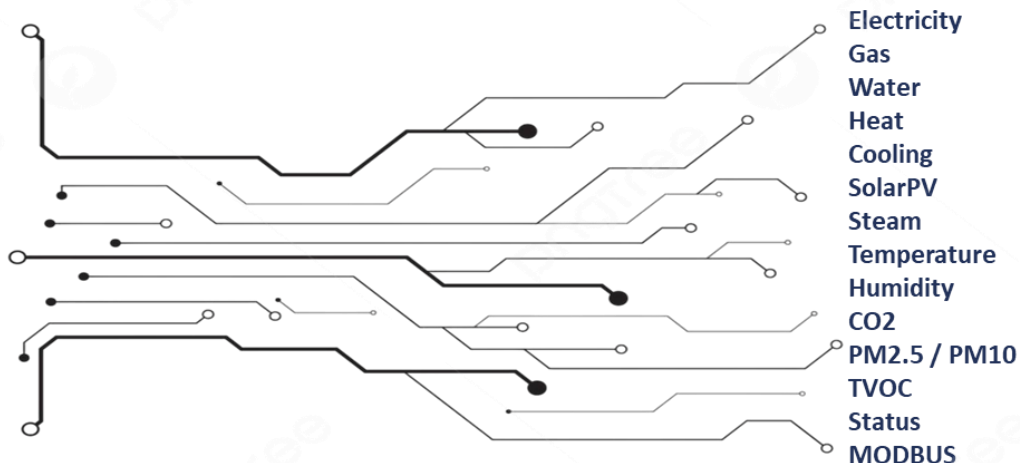
- **Cost Savings:** Identify energy inefficiencies and wastage, enabling targeted interventions to reduce operational costs and improve cost-effectiveness.
- **Efficiency Optimisation:** Gain actionable insights to optimise energy usage, equipment performance, and operational processes, enhancing overall efficiency and productivity.
- **Sustainability:** Support sustainability initiatives by minimising carbon footprint and promoting environmentally responsible energy practices.
- **Compliance:** Facilitate compliance with regulatory requirements and industry standards through accurate monitoring, reporting, and documentation of energy usage data.
- **Predictive Maintenance:** Anticipate equipment failures and maintenance needs through predictive analytics, minimising downtime and maximising asset lifespan.

Managed by Elcomponent Metering Experts:

- **Expertise:** Benefit from the experience and expertise of Elcomponent metering specialists in implementing and managing energy monitoring solutions tailored to your specific requirements.
- **Support:** Receive comprehensive support throughout the lifecycle of the solution, including installation, configuration, maintenance, and ongoing optimisation.
- **Training:** Access training and resources to empower staff with the knowledge and skills required to leverage the full potential of the energy monitoring solution.

01278 503173 | sales@elcomponent.co.uk

www.lora-sense.co.uk | www.elcomponent.co.uk



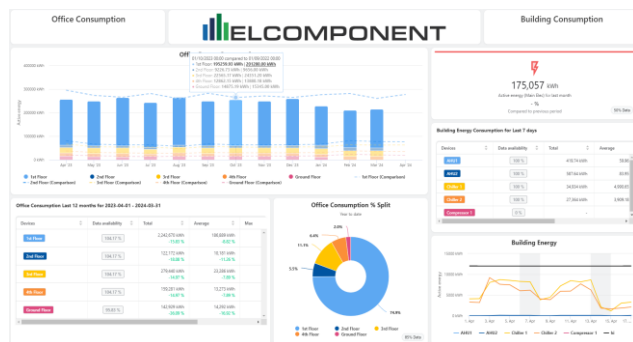
Supported Sensors:

- Easton (3ph MID & 1ph MID) kWh
- Gridmate kWh
- Dual Pulse (Battery operated 10years)
- Single Pulse (Battery operated 5-10 years)
- Temperature (Battery)
- Humidity (Battery)
- MODBUS (supports Elcomponent kWh meters)
- Other Sensors and Measurement types on application



MW2 Energy Analytics:

- Unlimited Users / Pay as you go
- Energy Analysis and graphing
- Monitoring & Verification (M&V)
- Dashboards and display screens
- Alerts
- Automated Reports
- Custom Reports



Contact Us:

For inquiries or to learn more about our energy monitoring solution powered by LoRaWAN technology and managed by Elcomponent metering experts, please contact us.

01278 503173 | sales@elcomponent.co.uk

www.lora-sense.co.uk | www.elcomponent.co.uk